

Chip Common Mode Choke 晶片共模抗流線圈

Features 特色

Suitable for differential signal line like IEEE1394, USB2.0 and LVDS, because general chip bead does not provide distortion to high speed signal transmission.

由於共模線圈於高速訊號傳輸時不會造成失真現象，適用於各種不同的傳輸訊號，如 IEEE1394、USB2.0 及低電壓差動訊號線。

Application Field 應用領域

Common mode noise suppression of signal lines speed and high density digital equipment such as personal computer and facsimiles, modem, digital telephones.

應用於高傳輸速度及高密度封裝之數位電子設備，如個人電腦、傳真機、數據機及數位電話等。

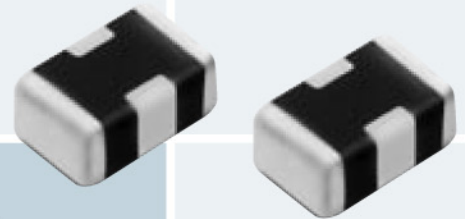
Series	Size	Impedance	Test Freq.	DCR max.	Rated Current	Rated Voltage	Withstand Voltage
產品系列	尺寸	阻抗(Ω)	測試頻率(MHz)	直流電阻最大值(Ω)	額定電流(mA)	額定電壓(V)	耐電壓(V)
CM1206H	3.2(L)* 1.6(W)* 1.1(T)mm/ 0.126(L)* 0.06(W)* 0.04(T)inch	90-550	100	0.3-0.5	400-700	50	125
CM1206W	3.2(L)* 1.6(W)* 1.1(T)mm/ 0.126(L)* 0.06(W)* 0.04(T)inch	90-280	100	0.5-0.8	400-500	50	125
CM0805W	2.0(L)* 1.25(W)* 1.1(T)mm/ 0.08(L)* 0.05(W)* 0.04(T)inch	90-120	100	1.0-1.2	300-400	10	25
CM1206W	3.2(L)* 1.6(W)* 1.1(T)mm/ 0.126(L)* 0.06(W)* 0.04(T)inch	90-120	100	1.0-1.2	300-400	10	25

3-Terminal Chip EMI Filter 3端頭晶片EMI 濾波元件

Features 特色

3-terminal chip filters are used for supplying a broadband EMI filter for source suppression and receiver noise reduction in digital circuits and other signal lines. While the signal or dc current passes directly through the 3-terminal chip EMI filters, unwanted noise is suppressed by the grounding of the high frequency component.

3端頭晶片EMI濾波元件用於數位線路和其他訊號線上時，可提供寬頻的電磁干擾濾除功能，抑制來源端電磁干擾，以及降低接收端雜訊，當訊號或直流電通過3端頭晶片EMI濾波元件時，雜訊會被其中的高頻元件以接地的方式所抑制。



Application Field 應用領域

Computer and peripherals, I/O interconnect port, cellular/cordless phone, automotive electronics devices, TV, VTR, CD player, MD player, DVD, medical Instrumentation, test equipment.

電腦和其周邊設備、輸入/輸出連接埠、行動/無線電話、車輛電子設備、TV、VTR、CD播放機、MD播放機、DVD、醫療儀器、測試設備

Series	Size	Capacitance	Operating Temperature	Rated Voltage max.	DCR max. ⁺²
產品系列	尺寸	電容值(pF) ⁺¹	操作溫度範圍Range(℃)	最大額定電壓(V)	電流電阻最大值(Ω)
CT0805N	2.0(L)*1.25(W)*0.9(T)mm/ 0.08(L)*0.05(W)*0.035(T)inch	22-470	-55 ~ +125	50	0.5
CT0805X		1,000-47,000	-55 ~ +125	50	0.5
CT0805Y		100,000	-30 ~ +85	25	0.5
CT1206N	3.2(L)*1.6(W)*1.1(T)mm/ 0.126(L)*0.06(W)*0.04(T)inch	22-470	-55 ~ +125	50	0.4
CT1206X		1,000-47,000	-55 ~ +125	50	0.4
CT1206Y		100,000	-30 ~ +85	25	0.4

- The maximum rated currents of all specification are 500mA
- The minimum insulation resistances of all specification are 1,000 MΩ
- *1 The capacitance tolerance is +50 ~ -20 %
- *2 DC resistance value is between feed-through terminals.

所有規格的最大額定電流為 500mA
所有規格的最小絕緣阻抗為 1,000 MΩ
電容值的容許範圍為 +50 ~ -20 %
指位於 feed-through 兩端頭間的直流阻抗